

Status: PLANNING

© Copyright, all rights have been asserted under the Design, Patents & Copyright Act 1988

- Do not scale from the drawing.
- The Contractor is to check all site dimensions and levels before work commences.
- This drawing must be read with and checked against all structural and other specialist drawings, specifications and bills of materials.
- The Contractor is to comply with all current British standards and Building Regulations whether or not specifically stated on these drawings.
- Notify Client and Addo Design Ltd of any discrepancies.

Rev.	Description	Date
A	Parking updated	16.08.2021
B	Parking updated	10.11.2021



Addo Design Ltd
Company Reg. No. 5028447
t: +44(0)1505 705000
e: info@addo-design.com
w: www.addo-design.com

addo[®]
drawing on experience

Client: **NORDHUS PROPERTIES LTD**

Project: Hockley Industrial Centre
Hockley Lane
Redhill
Surrey

Title: **Proposed Site Layout**

Scale: A3- 1: 500

Date: 21.04.2021

Dwg No: **PL 21-572- 04**

Rev: **B**

Rev.	Description	Date



Hooley Lane Elevation



Left Flank Elevation



Sketch View 2 - Fronting Hooley Lane



Sketch View 3 - Courtyard Elevation



Sketch View 4 - Entrance Corner Fronting Hooley Lane



Rev.	Description	Date



Front Courtyard Elevation



Right Flank Elevation



Roof Plan



Sketch View 1

[illegible]

Left Flank Elevation



Front Primary Elevation



Right Flank Elevation

Roof Plan



Rear Elevation

Rev.	Description	Date
A	Disclosed and restricted opening windows to rear extrusive acids?	16.06.2021
B	After 10 updated as per RC comments email dated 08.11.2021	09.11.2021



An architectural elevation drawing of a three-story brick building. The building features a flat roof and is constructed from red brick. The facade is punctuated by several windows: two small, narrow vertical windows on the top floor; a large double window with a dark frame on the second floor; and a large double window with a dark frame on the third floor. A balcony with a dark metal railing is located on the second floor, extending from the large double window. The building is set against a plain white background, and a grey base line is visible at the bottom.

concealed and recessed opening windows

high level windows, concealed and recessed opening

large and angled opening windows

Second floor plan showing two main apartment units, 57 and 59, separated by a central stair core. Unit 57 (left) includes a living kitchen, two bedrooms (bed 1, bed 2), a bathroom, and a closet (cpd). Unit 59 (right) includes a living kitchen, two bedrooms (bed 1, bed 2), a bathroom, and a closet (cpd). The central stair core has stairs going up and down. The plan also shows a lobby area and a parking area with a car icon. The building's exterior walls are highlighted in red.

The floor plan shows a large rectangular main area with a smaller rectangular extension on the left side. The extension contains a square room. The main area has a large square room on the right and a smaller rectangular room on the left. The extension is connected to the main area by a narrow corridor. The plan is oriented with the extension on the left and the main area on the right.

The image displays three floor plans for properties 54, 55, and 56, each with a red outline and pink shading on the walls.

- Property 54 (top left):** Labeled "discouraged and restricted opening windows". It features a living kitchen, two bedrooms (bed 1, bed 2), a bathroom, a store, and a lobby. A "high floor window, discouraged and restricted opening" is noted on the upper right wall. The entrance leads into a hallway connecting the rooms.
- Property 55 (top right):** Labeled "discouraged and restricted opening window". It includes a living kitchen, a bedroom (bed 1), a bathroom, and a hallway. The entrance is on the right side.
- Property 56 (bottom):** Labeled "discouraged and restricted opening window". It consists of a living kitchen, two bedrooms (bed 1, bed 2), a bathroom, and a hallway. The entrance is on the left side.

The image displays three floor plans of a residential building, labeled 60, 61, and 62. Each plan shows a different layout of rooms including bedrooms, bathrooms, living areas, and a kitchen. The plans are color-coded with red outlines for walls and doors. Plan 60 shows a layout with a central stair core and a lobby. Plan 61 shows a layout with a central hall and a kitchen. Plan 62 shows a layout with a central hall and a kitchen. Each plan also includes a legend for 'observed and indicated opening windows' and 'observed and indicated opening windows'.

A 3D architectural rendering of a modern, multi-story brick building. The building features a mix of red brick and grey concrete panels. It has large, multi-paned windows and several balconies with dark metal railings. The building is shown from a low angle, emphasizing its height. The background is plain white.

A 3D architectural rendering of a modern, multi-story brick building. The building features a mix of red brick and grey concrete panels. It has large, multi-paned windows and balconies with dark metal railings. The structure is shown from a low-angle perspective, emphasizing its height. The background is a plain white sky.

Addo Design Ltd
Company Reg No: 0800247
T: +44(0) 1275 700000
E: info@addo.design
W: www.addo.design

addo
drawing on experience

Project: Land at:
Hockley Industrial Centre
Hooley Lane
Redhill
Surrey

Title: Block 3-Floor GA Plans, Elevations and Sketch Views

Scale: A1- 1 : 100 Date: 31.04.2023

Org No: PL 21-572- 300 Rev: B

- Do not scale from the drawing.
- The Contractor is to check all site dimensions and levels before work commences.
- This drawing must be read with and checked against all standard and other specialist drawings, specifications, and bills of quantities.
- The Contractor is to comply with all current British Standards and Building Regulations whether or not specifically stated on these drawings.
- Notify Client and Addo Design Ltd of any discrepancies.

Rev.	Description	Date



Primary Front Elevation



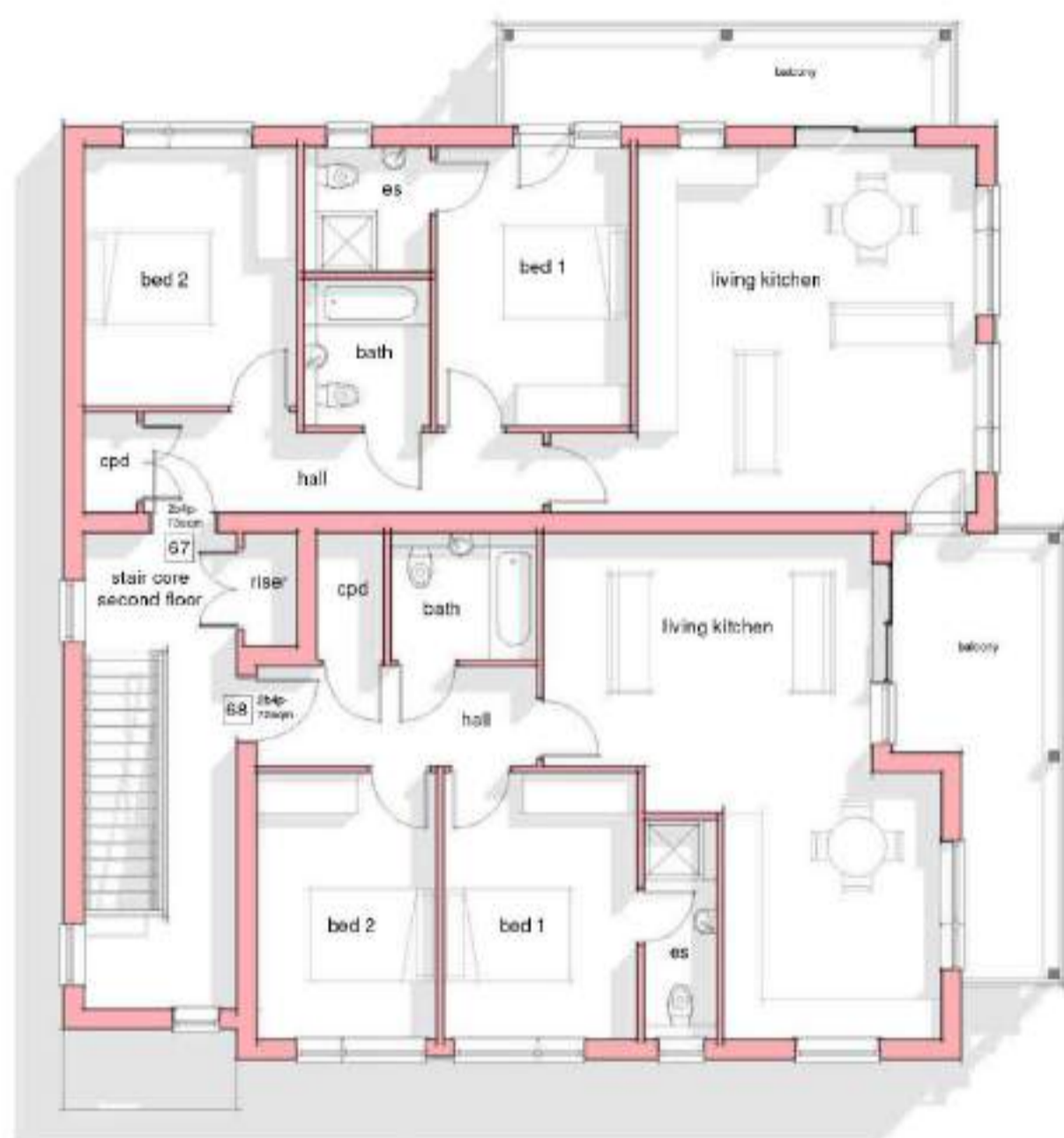
Hooley Lane Elevation



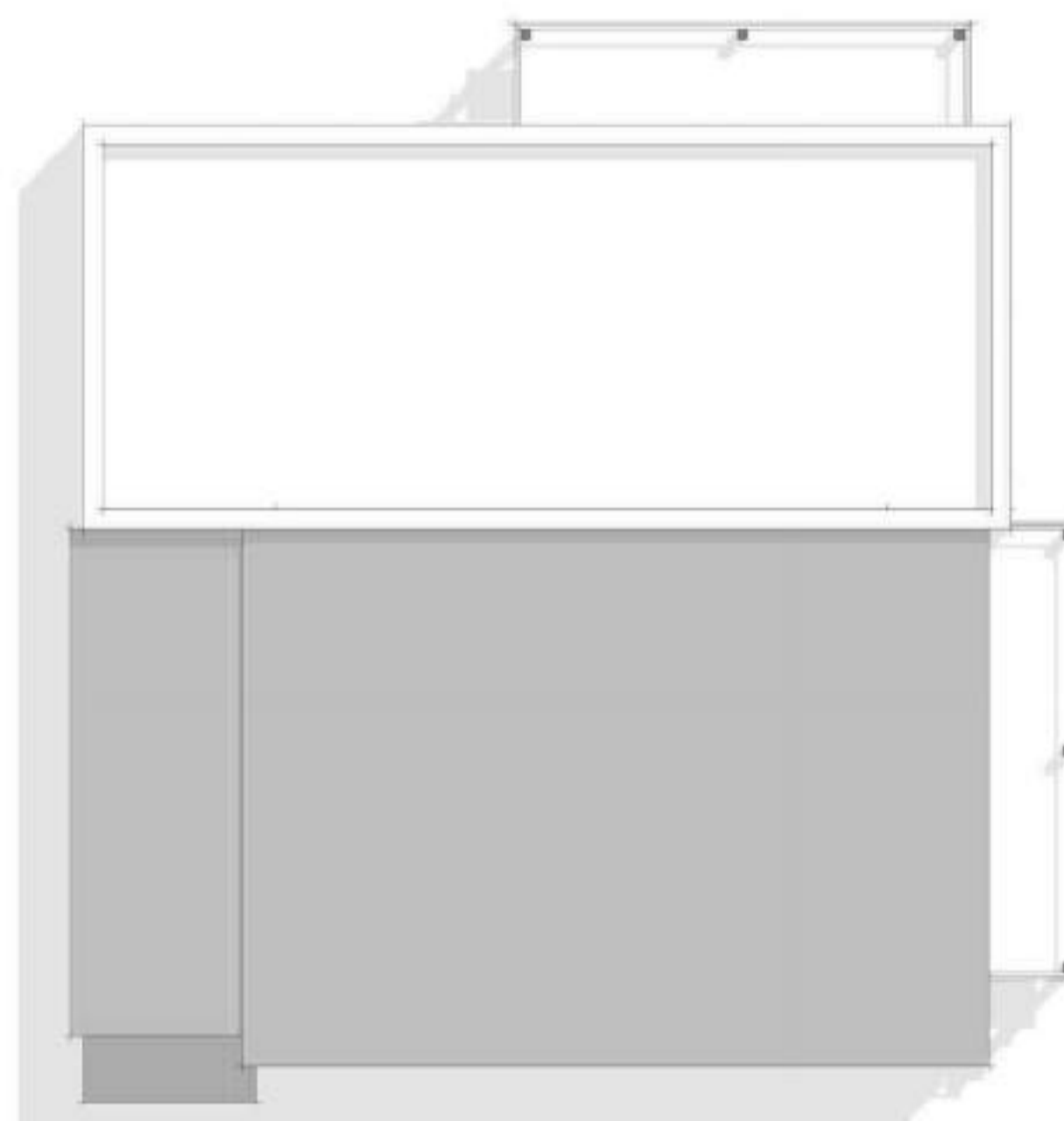
Rear Elevation



Flank Elevation to Brighton Terrace



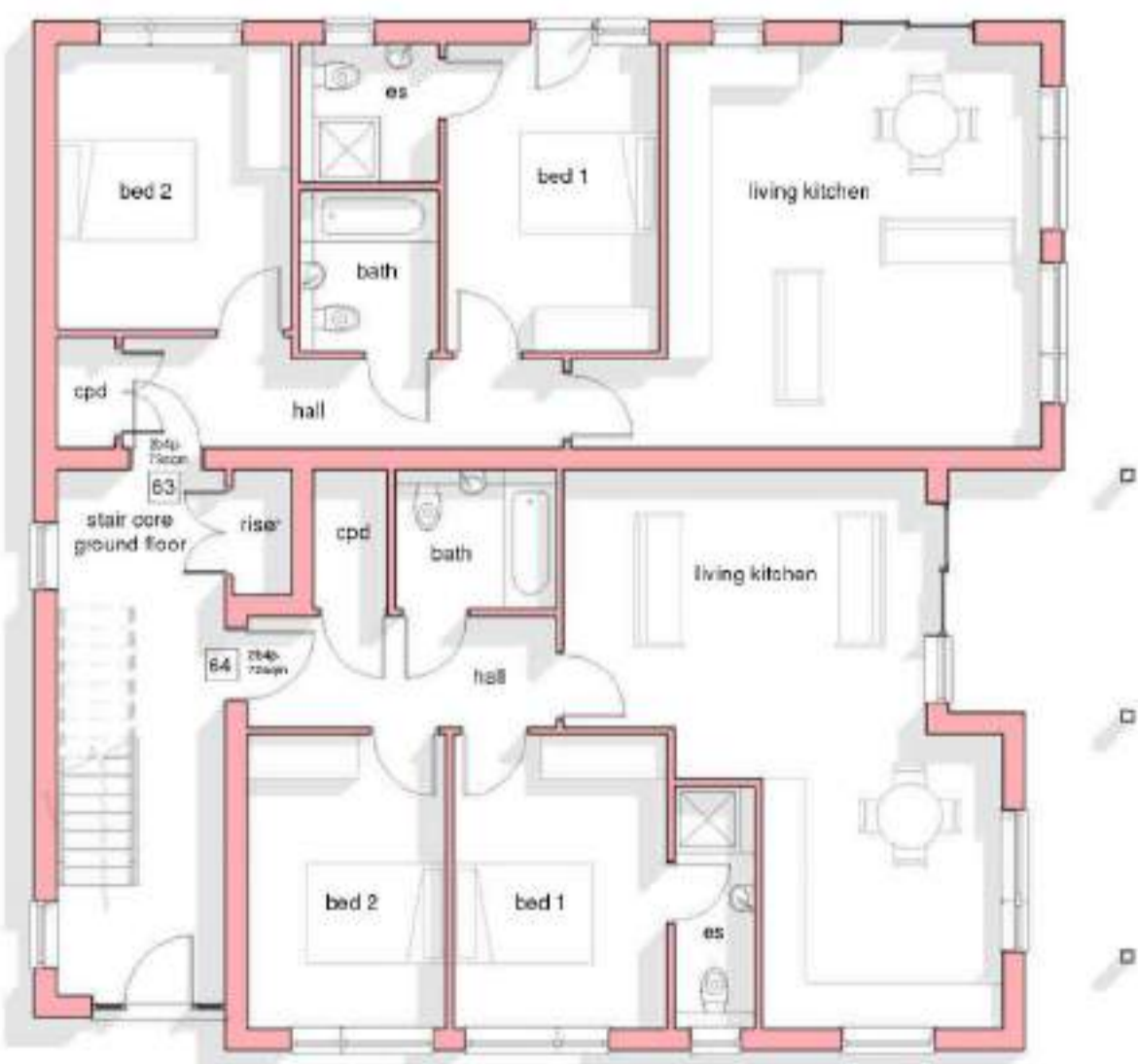
L3 Penthouse Floor Plan



Roof Plan



Sketch View 1 - Front Corner



L1 Ground Floor



L2 First Floor



Sketch View 3- Site Entrance Corner Fronting Hooley Lane



Sketch View 2 - Rear Corner Fronting Hooley Lane

Addo Design Ltd
Company Reg. No. 80304
1: +44(0) 1825 7350
4: addo@addo-design.com

addo
drawing on experience

Client: Nordhus Properties Ltd

Project: Land at:
Hockley Industrial Centre
Hooley Lane
Redhill
Surrey

Title: Block 4-Plans, Elevations & Sketch Views

Scale: A1- 1:100 Date: 21.04.202

Dim No: PL 21-572-400 Rev:

Date: 21.04.202







KSM
ARE ON THE
MOVE!





K.S.M.
AUTO CLINIC
01753 760718

HOCKEY
TYRE SALES



ARE ON THE MOVE!

