

Community Safety Partnership

Update

February 2024

The Reigate and Banstead Community Safety Partnership

A statutory responsibility for responsible bodies to identify local community safety needs and work together to address them.



How we work together, our problem solving approach

Community Safety Partnership (CSP)

The CSP provides strategic leadership and co-ordination between partners with the overall aim of improving well-being in the Borough. It specifically discharges the statutory responsibilities of the Borough's Community Safety Partnership including acting jointly to seek to reduce crime and disorder in the Borough.

The Reigate and Banstead CSP meets quarterly.

Community Harm and Risk Management Meeting (CHaRMM)

CHaRMM discuss and agree actions to reduce the negative impact that some individuals and families have on communities through their anti-social behaviour.

This multi-agency group share information on high risk cases and incidents and put in place appropriate plans to address the behaviours and reduce the negative impacts on victims.

The Reigate and Banstead CHaRMM meets monthly.

Joint Action Group (JAG)

JAG addresses crime and disorder issues that have been identified by partner agencies. The focus is on geographic areas of concern.

Utilising partner expertise the group identify desirable outcomes and determine the actions and interventions to be used to achieve these outcomes.

The Reigate and Banstead JAG meets every 6 weeks.

The CSP also holds quarterly **serious organised crime joint action groups**, chaired by Surrey police.

- We work closely with wider partnership groups incl. Community Development Partner Network meetings, Surrey Heartlands Place based meetings, and SCC's Risk Management Meetings.

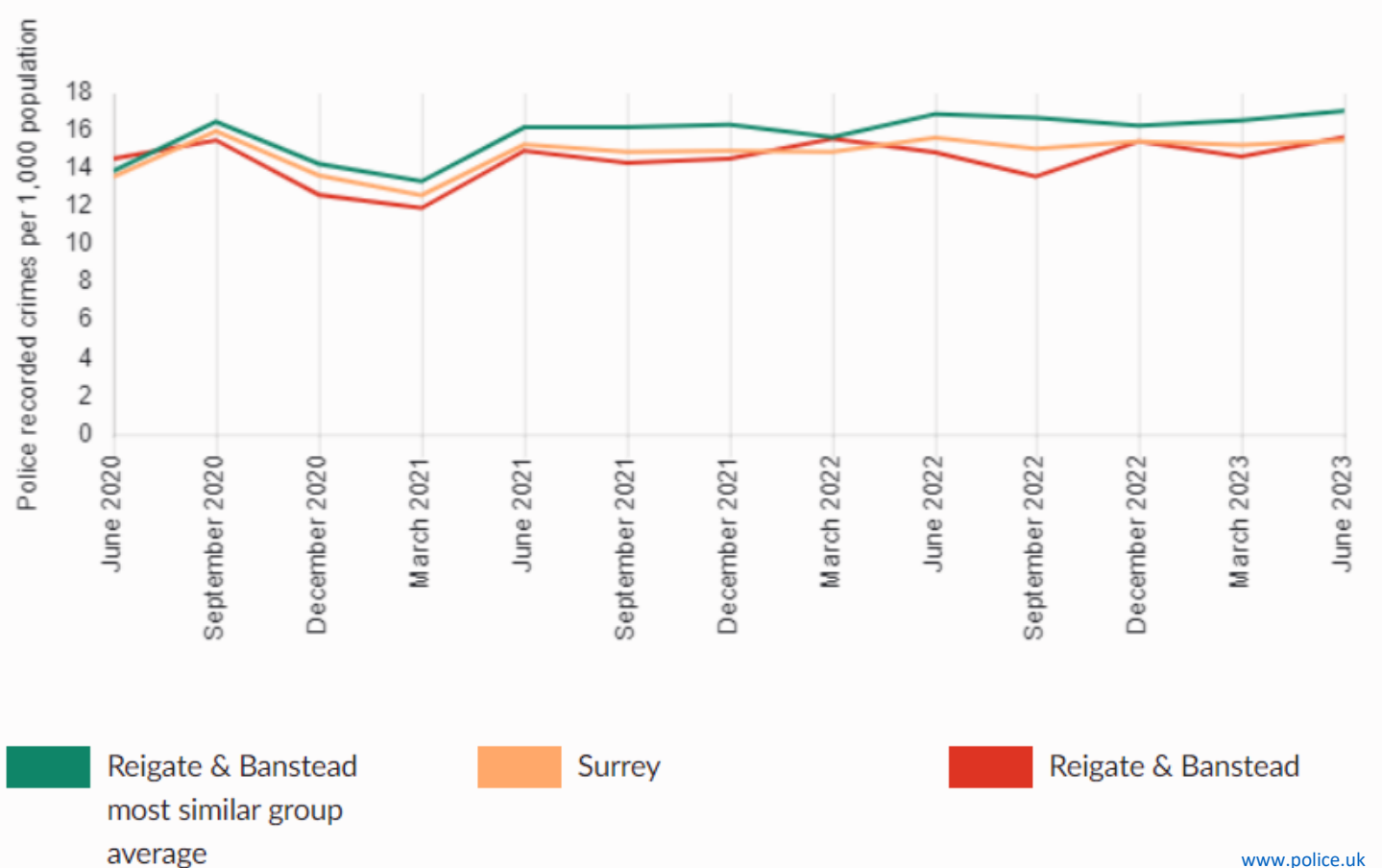
Community Safety Picture – Reigate and Banstead

Reigate and Banstead is a relatively low crime area

- Surrey is the 3rd safest police force area in England
- The crime rate in Reigate and Banstead is lower than comparable areas

The Community Safety Partnership focuses on working to make the Borough safer, informed by the views of partners and residents

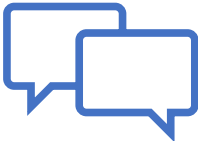
All crime



Public Space Protection Order - renewed for Redhill to cover 2023 – 2026 following strong support being expressed through a public consultation

ASB survey

Identifies a range of topics where the partnership can continue to work to improve community confidence in Redhill and other town centres



Review of 2021 - 2023 CSP plan

Key themes



Empowering
Communities to feel
safe



Protect the most
vulnerable from
harm



Responding to
Domestic Abuse



Tackling Anti-social
behaviour

Deliverables achieved include

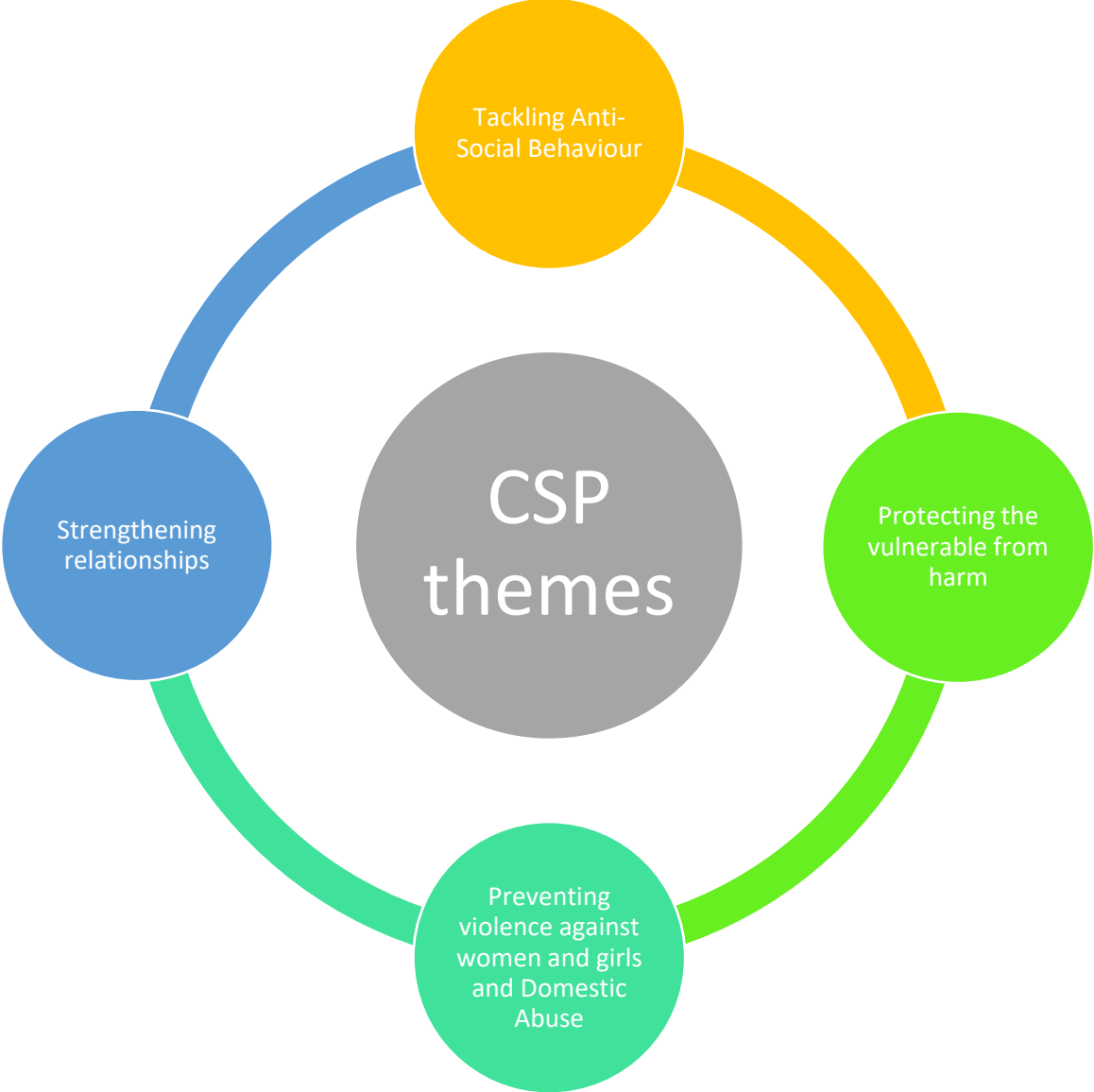
- Increased partner awareness of victims services via OPCC presentation and info
- Joint work between Raven and RBBC on community safety messages including - anti-fraud talks, crime prevention messaging to older residents and women's groups
- Started work re young people and "Get Connected" post covid (then paused)

- Developed use of Serious and Organised Crime Joint Action Group (SOC JAG)
- Co-ordinated work around asylum seekers
- Surrey Fire & Rescue Service safe and well visits approach implemented

- Surrey Downs Better Care funding extended IRIS (a GP referral scheme) into the North of the borough
- Shared insight and best practice from Hospital Independent Domestic Violence Advocates (IDVAs) across CSP partners
- Learning events for Domestic Homicide Reviews

- ASB week partner activities including ASB case review promotion
- Fly tipping co-ordination
- Development of JAG and CHaRMM

Community Safety Plan 2024/25 overview



Theme 1 – Tackling Anti-Social Behaviour

The CSP recognises that, whilst levels of crime are relatively low, where anti-social behaviour does occur it causes distress and damage to the affected residents, businesses and communities. The CSP will therefore build on the significant work already underway to continue to address anti-social behaviour.



- | | |
|--|--|
| <ul style="list-style-type: none"> • Continue to promote and action ASB case reviews • Continue actioning ASB reports and ASB case work • Joint partner action for ASB week | <p>Ongoing</p> <p>Ongoing</p> <p>Summer '24</p> |
| <ul style="list-style-type: none"> • Joint partner action to address fly tipping • Explore approaches to reduce fly tipping around Council recycling sites, where some of the highest volumes are seen | <p>Ongoing</p> <p>Ongoing</p> |
| <ul style="list-style-type: none"> • Actively address concerns about noise • Clarify arrangements and tools across Council to ensure appropriate responses (JET, Environmental Health and Community Safety) | <p>Ongoing</p> <p>Spring '24</p> |
| <ul style="list-style-type: none"> • Deliver against commitments in Safer Streets Redhill bid, including YMCA detached youth work and bus • Redhill PSPO annual review • Integrate with wider Redhill work (see further activities in plan) | <p>By Mar '25</p> <p>Autumn '24</p> <p>Ongoing</p> |

JAG and CHaRMM Meetings

Cases are reviewed at the next meeting.
The case may remain open for further monitoring, further action may be agreed or the group may agree the behaviour has reduced/ceased and the case can be closed.

A plan of action agreed and recorded.
Interventions delivered by partners.
Most common interventions include; **mediation, target hardening, informal visit, enforcement via community protection warnings or notices.**



Referrals from housing providers, local businesses, community development, Surrey County Council.
Most common concerns are: **Groups in public spaces, noise, drug related and litter**

Multi-agency information sharing.
Keeping victim needs central.
Identifying options
Collaborating with partners

JAG and CHaRMM are the local delivery groups in Surrey that CSPs establish to support their delivery, they are not particular to RBBC. In particular CHaRMMs are the agreed forum for implementation of tools and powers introduced by the ASB Crime & Policing Act where multi-agency information sharing, consultation or response may be required to support the process.

Tackling Anti-Social Behaviour



MAKING
COMMUNITIES
SAFER

#ASBawarenessweek

Problem Solving Multi-Agency Meetings

Joint Action Group (JAG)

Community Harm and Risk Management (CHaRMM)

Neighbourhood Police – responding to crime and utilising ASB enforcement such as Community Protection Notices

Social Housing Providers (e.g. Raven Housing) – work with partners and have enforcement powers such as closure orders they can use.

Local Authority

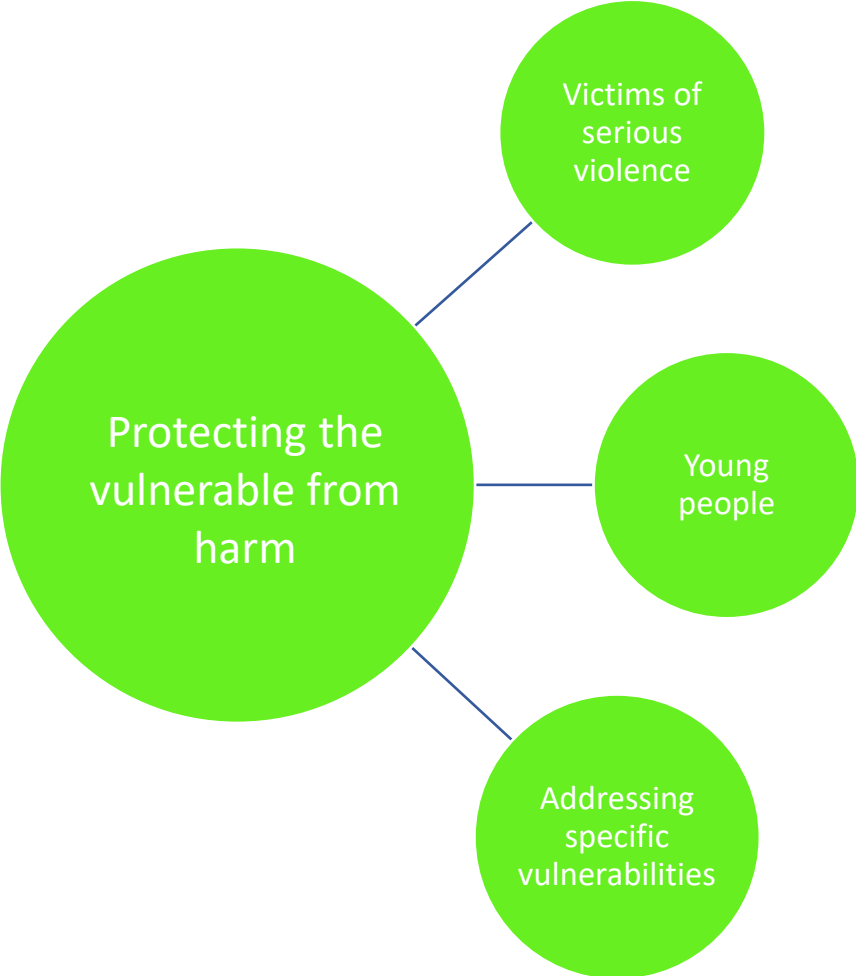
ASB Officer (person to person ASB casework), PSPO and Community Trigger

Joint Enforcement Team (Town Centre ASB, graffiti, fly tipping, encampments)

Environmental Health (Statutory noise)

Theme 2 – Protecting the vulnerable from harm

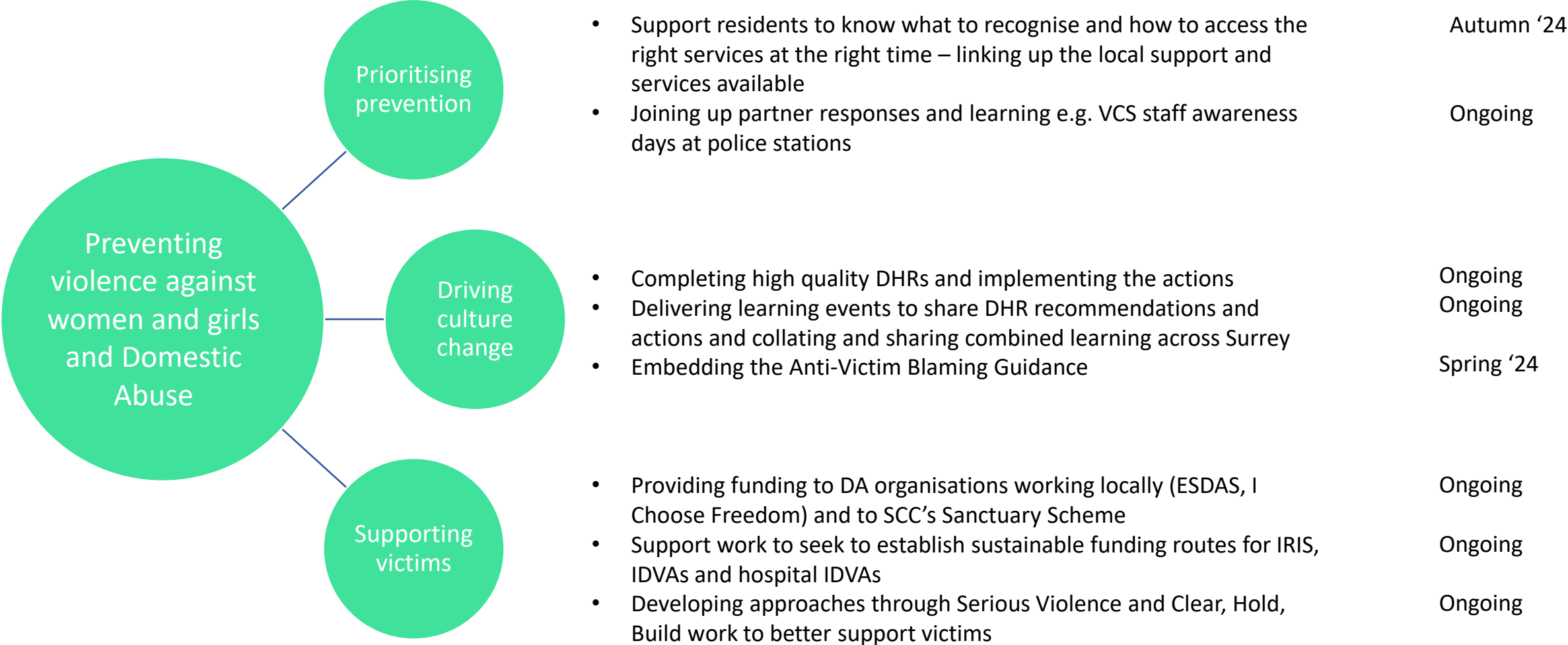
The CSP recognises that vulnerabilities can come in many forms and wants to ensure all of our communities in Reigate and Banstead continue to be protected from harm and victimisation.



- Develop and deliver actions to respond to the Serious Violence Duty and the priorities identified in the Surrey strategy of: Leadership; Evidence Based Response; Community Connections; Focused Prevention Summer '24
 - Deliver Clear, Hold, Build in Redhill applying this operational framework to our local context (aligns to Safer Streets, Redhill) Ongoing
- Reinvigorate 'Get Connected' the R&B youth partners' network Min. 3 events
 - Update approaches in light of 'Working Together to Safeguard Children' with particular regard to harm outside the home Autumn '24
 - Review partners' work on Child Exploitation - link in with Surrey child exploitation unit. Explore how Get Connected can support a joined-up approach Autumn '24
- Deliver briefing events to older residents on fraud prevention and community safety Ongoing
 - Deliver practitioner training and communications re Prevent Autumn '24
 - Refresh and update communications and training re Modern Slavery Winter '24

Theme 3 – Preventing Violence Against Women and Girls and Domestic Abuse

The CSP will continue the range of work already underway to prevent crimes that disproportionately affect women and girls. The CSP is also committed to addressing Domestic Abuse committed against victims of any gender and recognises the significant impact on children and families.



Domestic Homicide Reviews

- CSP is responsible for the management of reviews and implementation of the action plans
- Focused on learning

Real people and bereaved families

Mrs A - published
Doris - published
Maria, Alex, Tomas - published
Mary - published
Oliver – to be published 2024
Sandra – underway
NC – draft report completed
JAE – with the Home Office for Quality Assurance
TY – underway
LP – due to commence

What we know

- Victim blaming
- Information sharing
- Lack of professional curiosity
- Understanding coercive and controlling behaviour

Implementing Learning

- Learning from Experts
- Embedding best practice
 - IRIS
 - IDVA model
- Understanding the victim's voice

What more we can do

- Prevention
- Leading by example
- Remembering the real people and families at the centre
- Using our platform and position

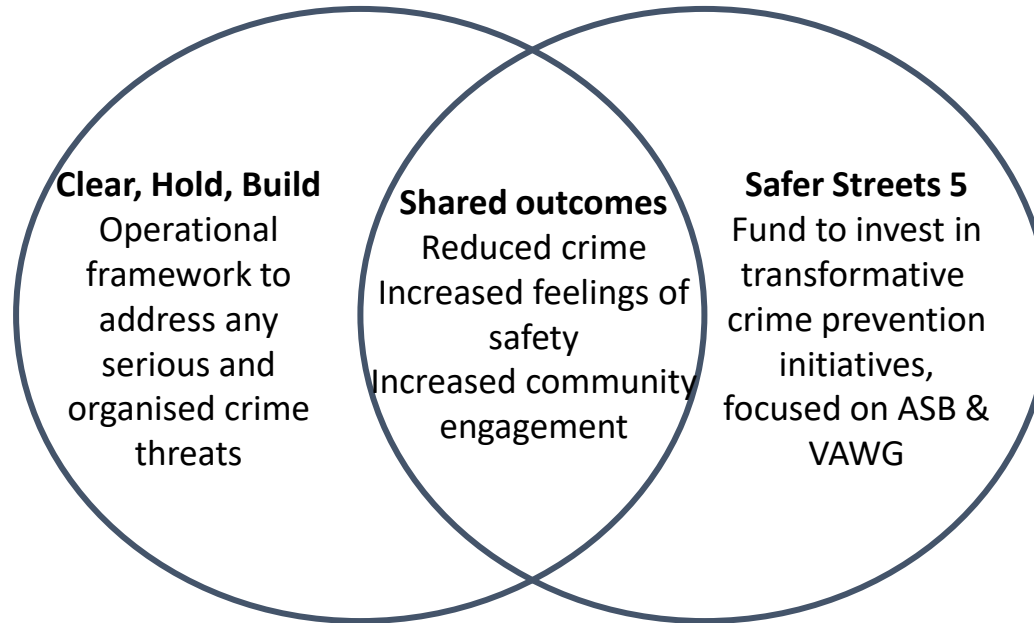
Theme 4 – Strengthening relationships with communities and partners

The CSP wants to work in an engaged, open and data informed manner ensuring that is it aware of local issues and working with communities and partners to solve problems being experienced in Reigate and Banstead.



Redhill – A place based approach to Community Safety

We will deliver, in partnership, against two core Home Office programmes to continue to improve safety in Redhill. Integrating with the work of the Redhill West Partner Network and wider partnership structures.



	Clear, Hold, Build	Safer Streets 5
Timescales	Activity to commence March 24 – ongoing timescales informed by need	Oct 23 – Mar 25
Key deliverables	Clear- Interventions to target known issues, Hold – Counter measures Build – Create sustainable resilience	Youth targeted intervention inc. YMCA bus Communications & engagement for residents Professionals and Street Pastor Training Target Hardening